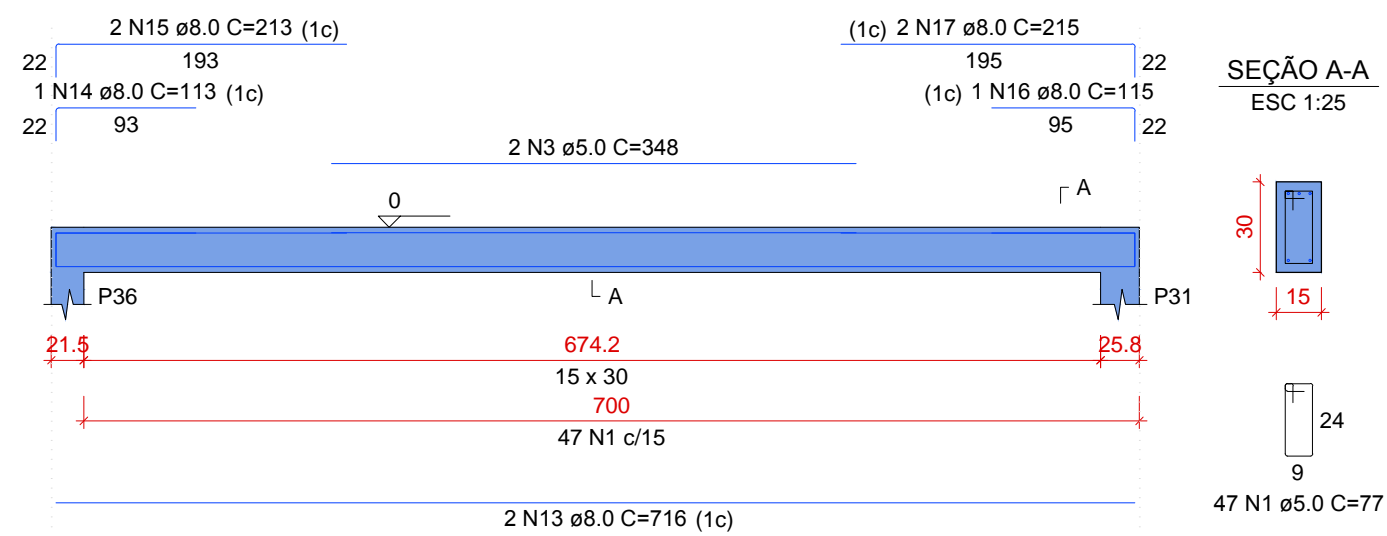


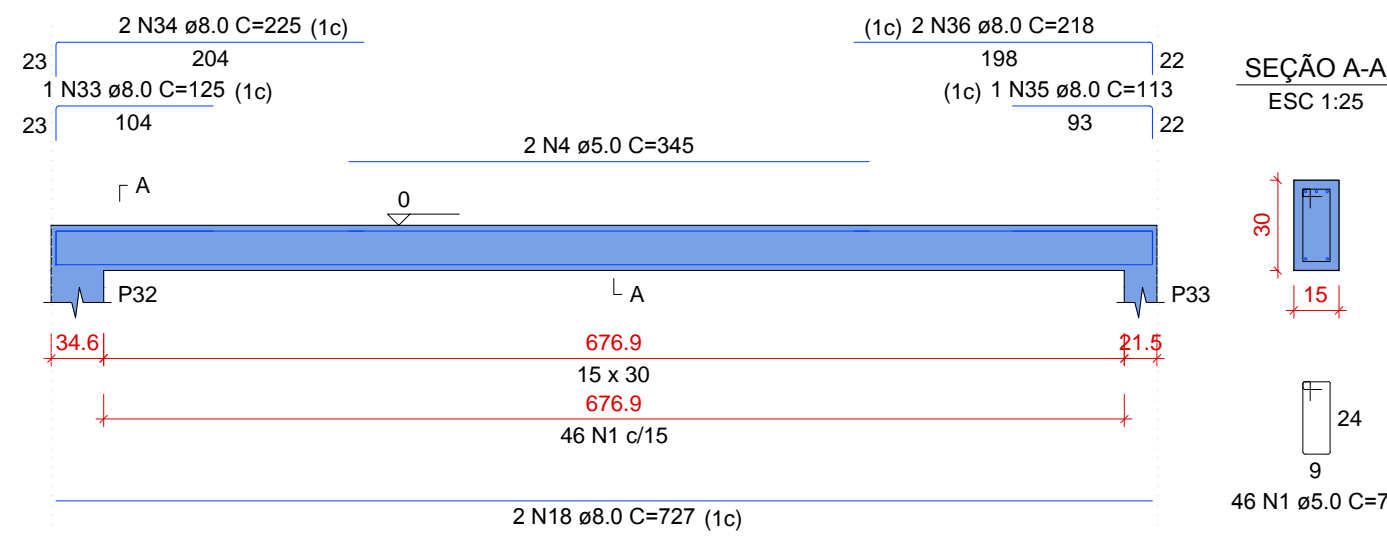
V44

ESC 1:50



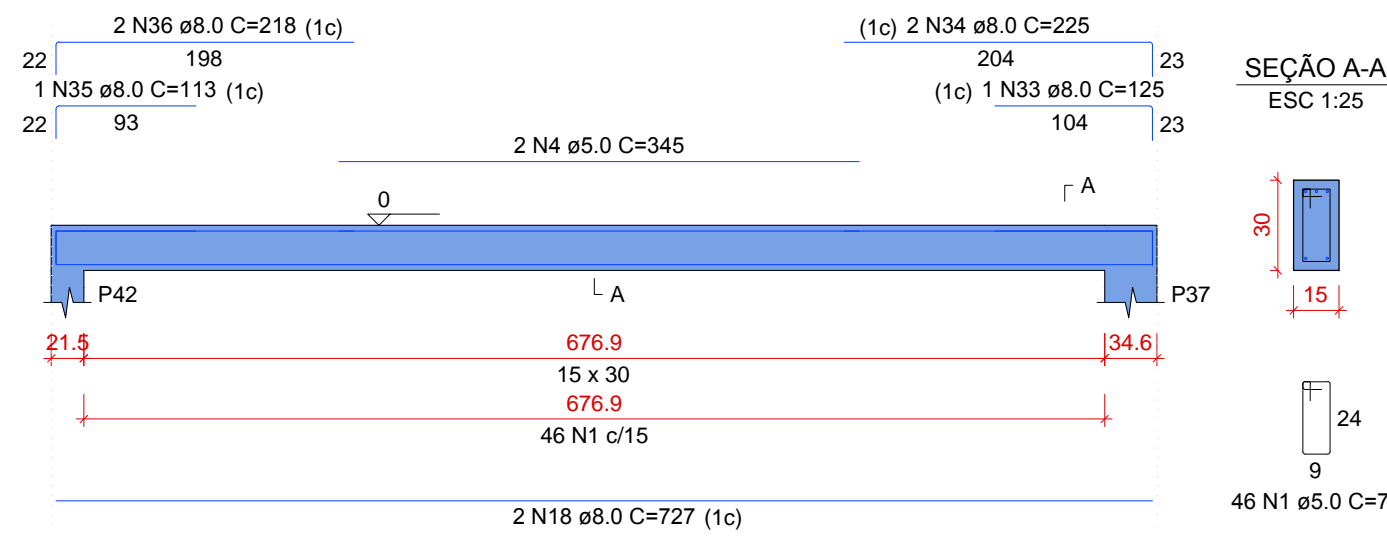
V48

ESC 1:50



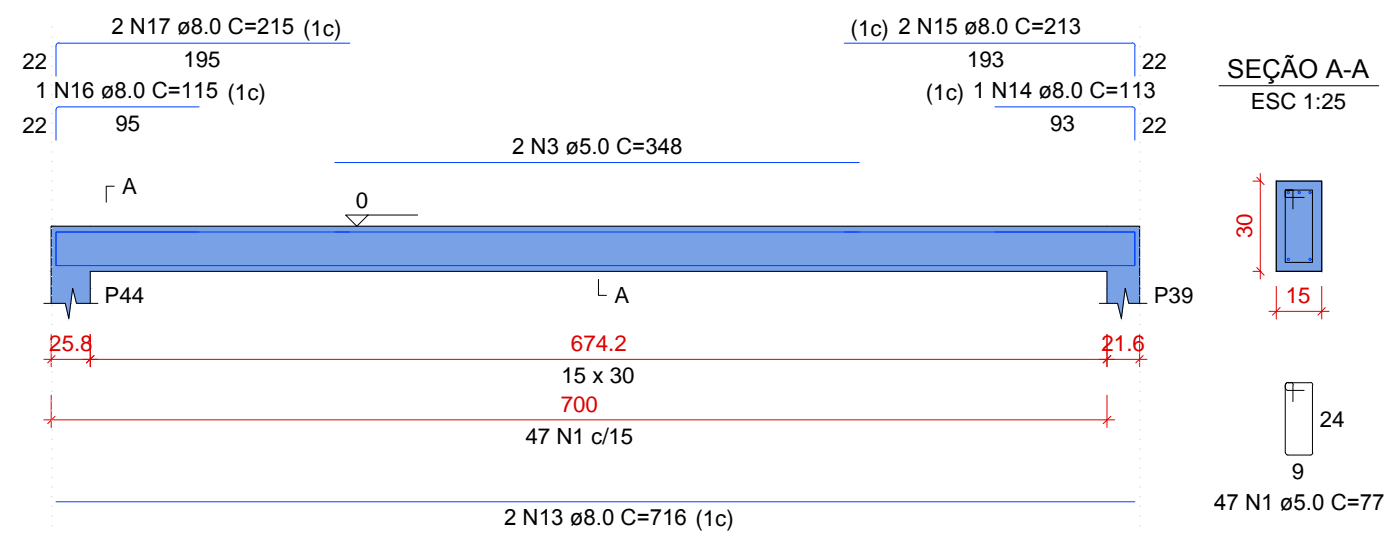
V52

ESC 1:50



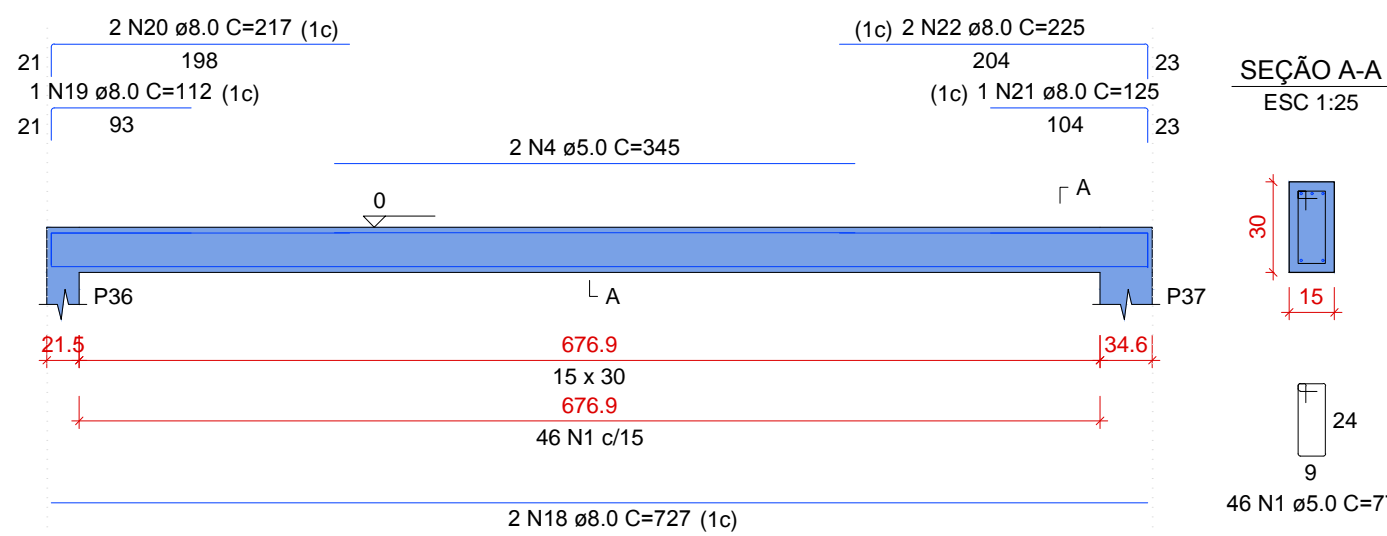
V56

ESC 1:50



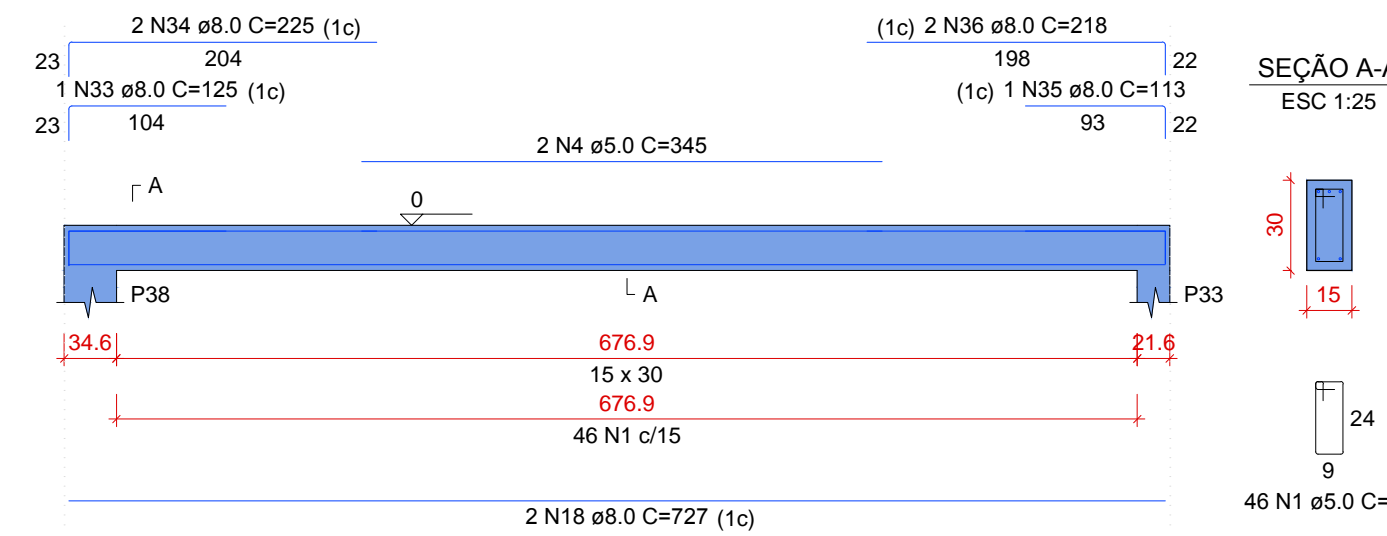
V45

ESC 1:50



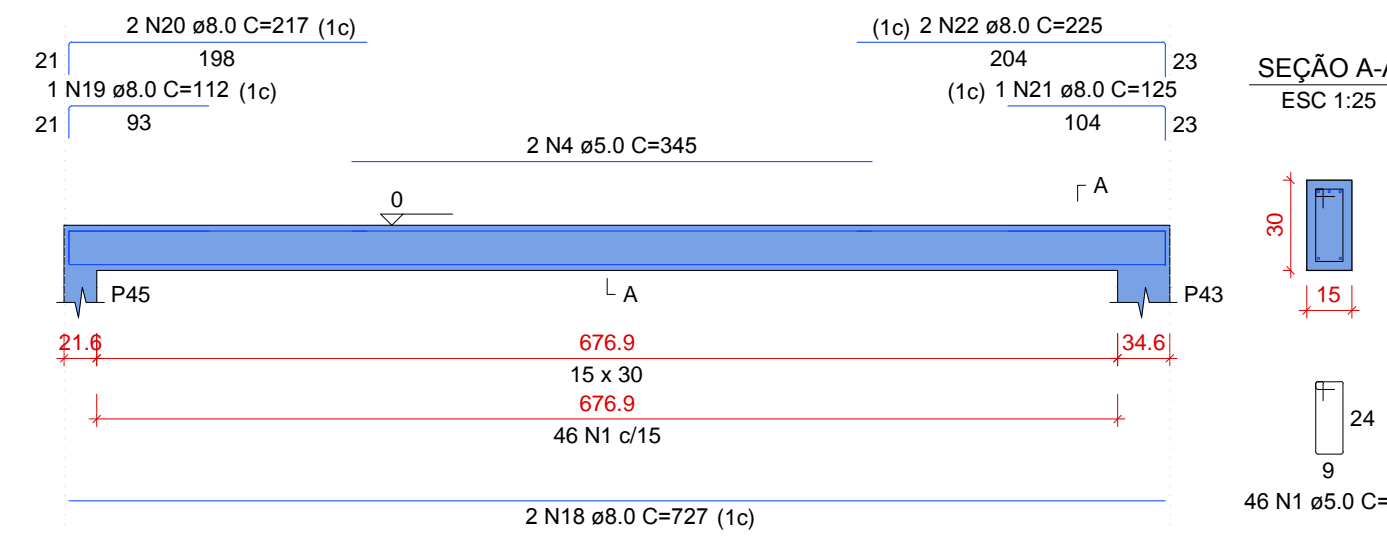
V49

ESC 1:50



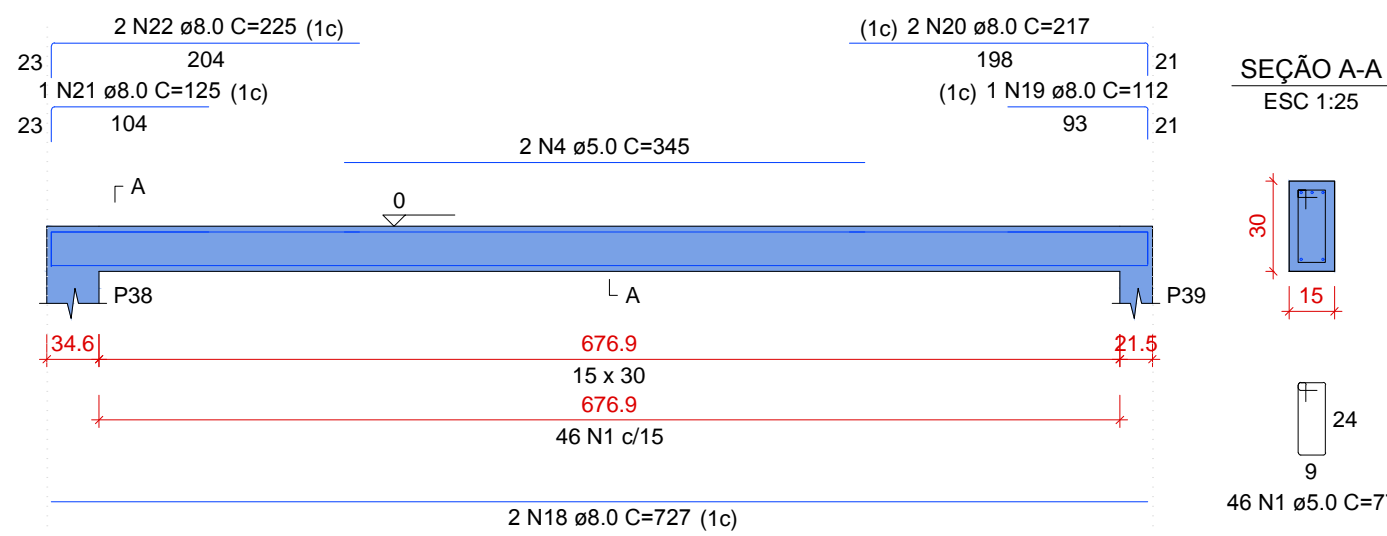
V53

ESC 1:50



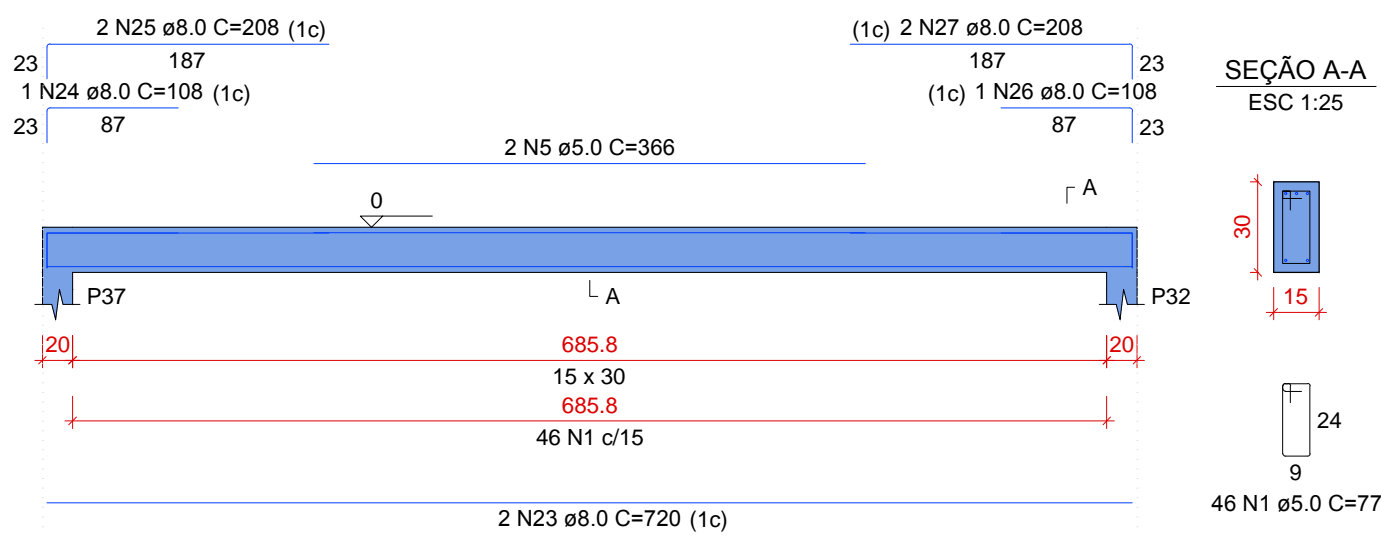
V57

ESC 1:50



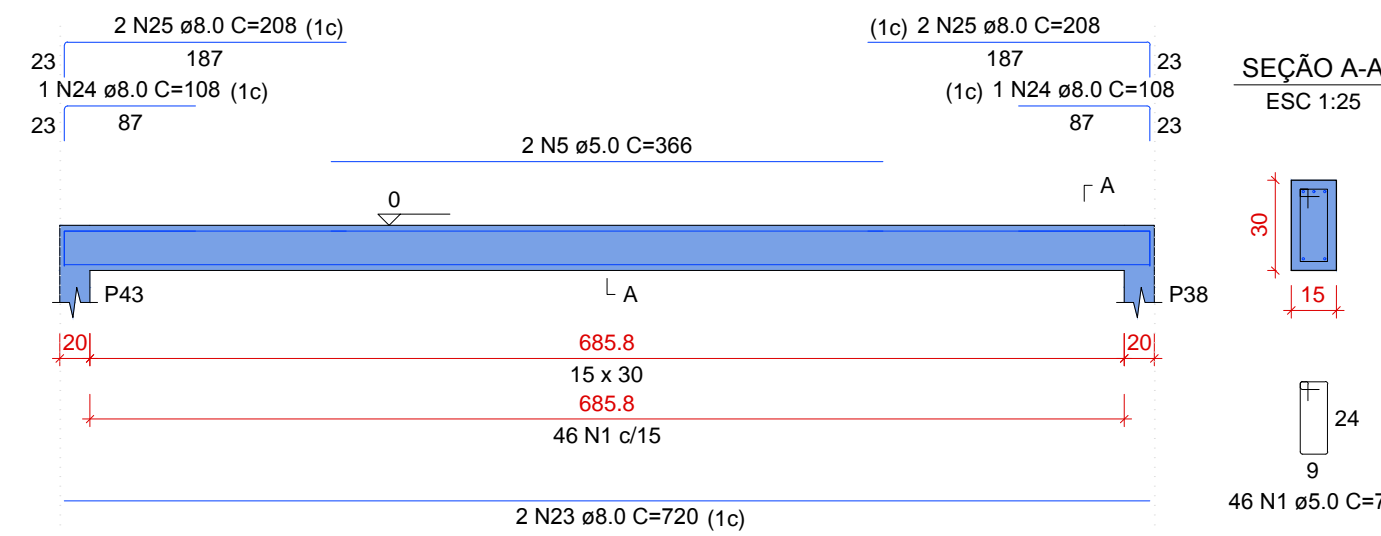
V46

ESC 1:50



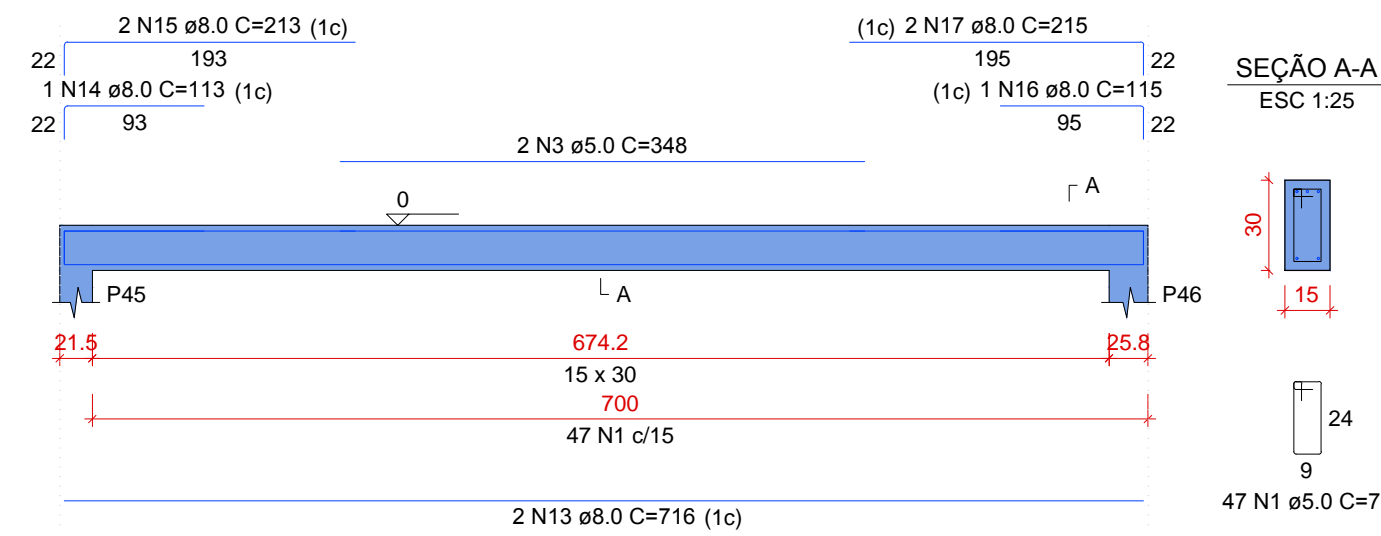
V50

ESC 1:50



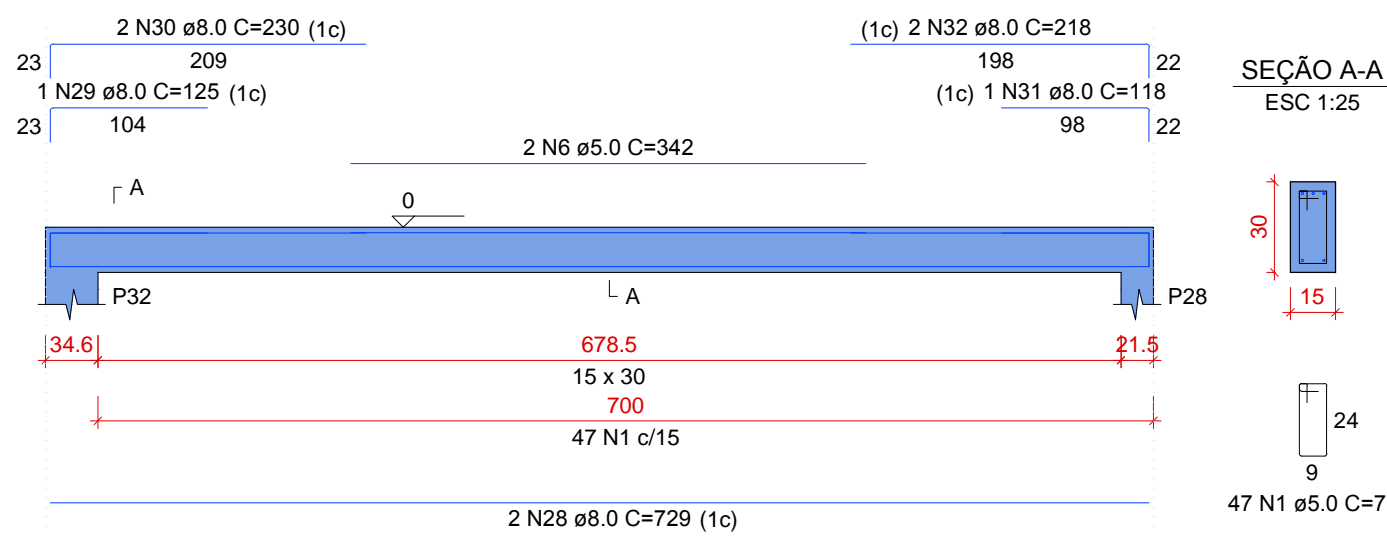
V54

ESC 1:50



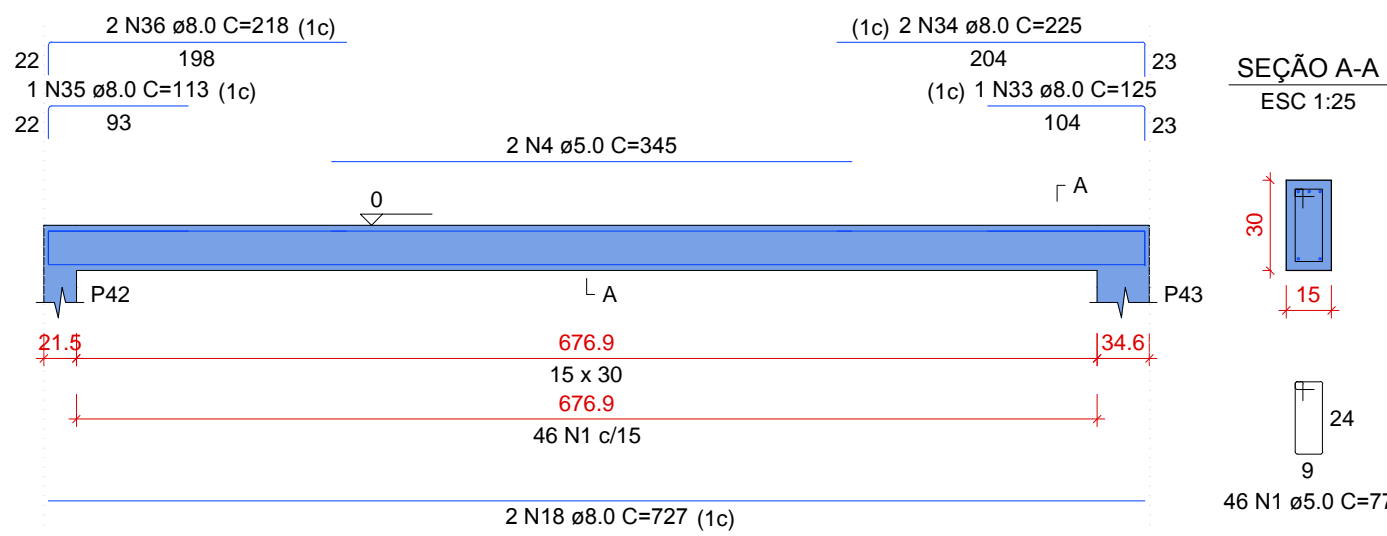
V47

ESC 1:50



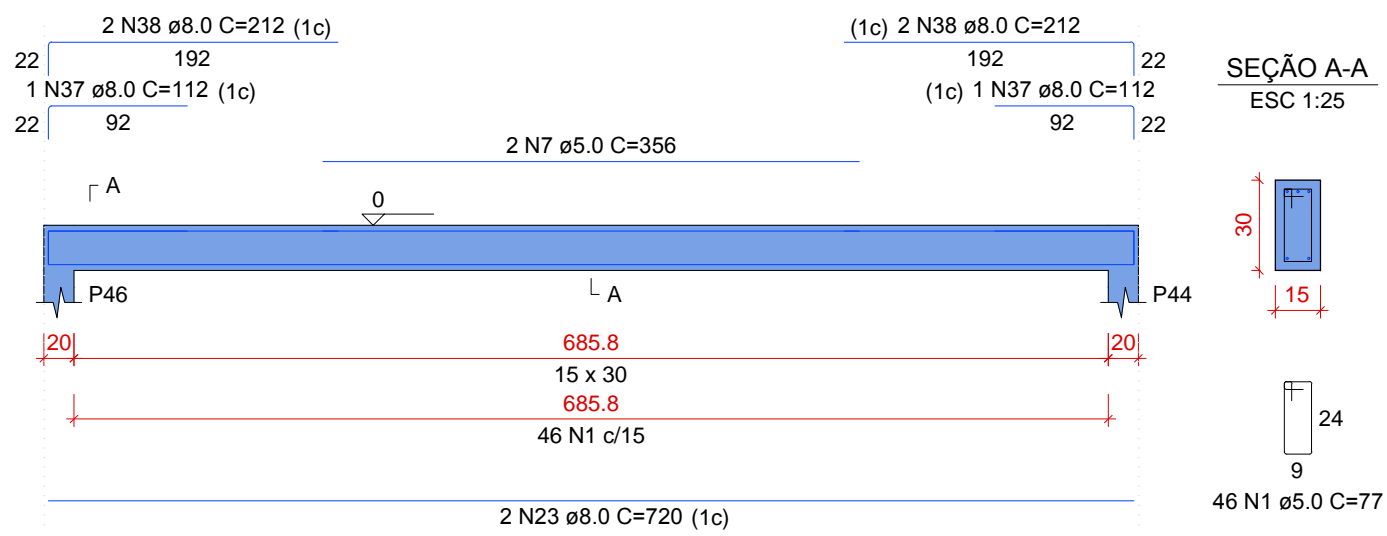
V51

ESC 1:50



V55

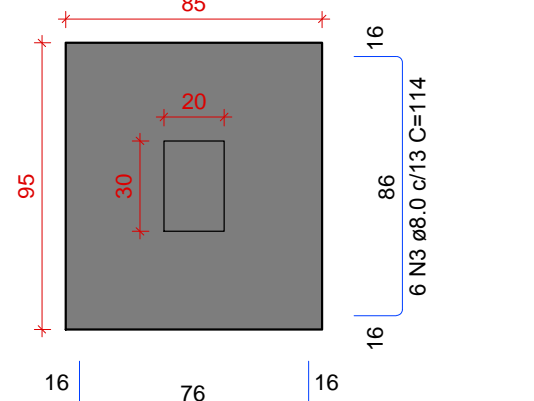
ESC 1:50



S1=S2=S3=S4=S5=S6=S9=S10=S11=S16=S19
=S20=S23=S24=S25=S26=S31=S33=S34=S35
=S36=S39=S42=S44=S45=S46

PLANTA

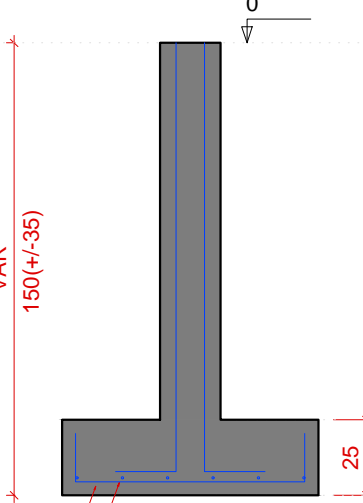
ESC 1:25



Solo com capacidade de suporte > 1.00 kgf/cm²
Solo compactado sobre a sapata
peso específico > 1600.00 kgf/m³

CORTE

ESC 1:25

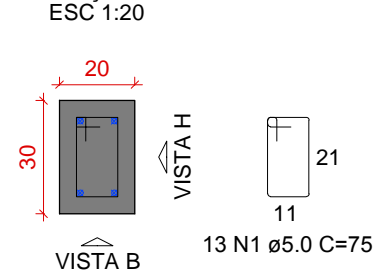


P1=P2=P3=P4=P5=P6=P9=P10=
=P11=P16=P19=P20=P23=P24=
=P25=P26=P31=P33=P34=P35=
=P36=P39=P42=P44=P45=P46

FUNDAÇÃO - L1

SEÇÃO

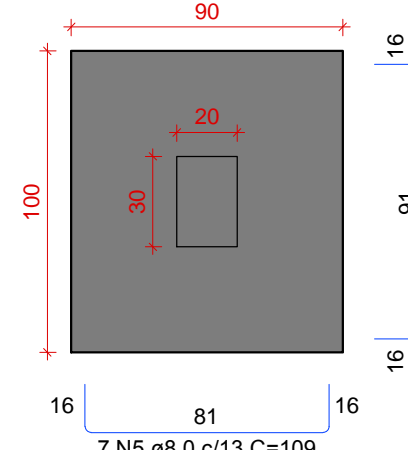
ESC 1:20



S40=S41

PLANTA

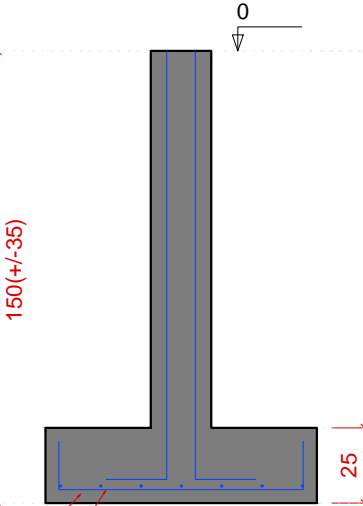
ESC 1:25



Solo com capacidade de suporte > 1.00 kgf/cm²
Solo compactado sobre a sapata
peso específico > 1600.00 kgf/m³

CORTE

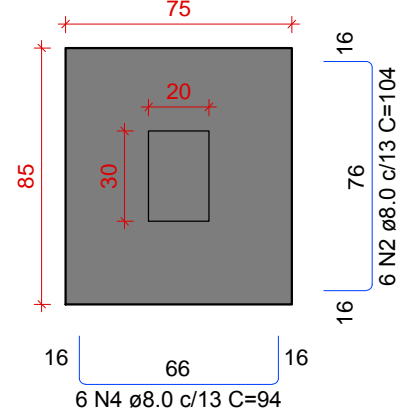
ESC 1:25



S7=S8=S12=S13=S14=S15=S17=S18=S21=S22
=S27=S28=S29=S30=S32=S37=S38=S43

PLANTA

ESC 1:25

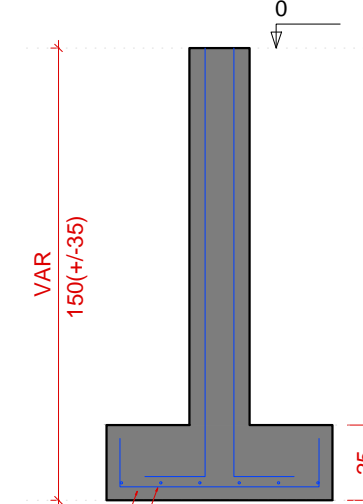


Solo com capacidade de suporte > 1.00 kgf/cm²
Solo compactado sobre a sapata
peso específico > 1600.00 kgf/m³

P7=P8=P12=P13=P14=P15=P17=
=P18=P21=P22=P27=P28=P29=
=P30=P32=P37=P38=P43

CORTE

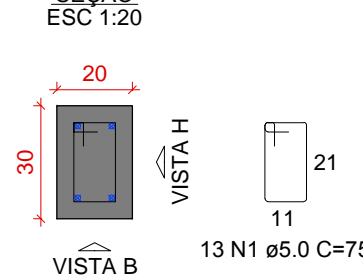
ESC 1:25



FUNDAÇÃO - L1

SEÇÃO

ESC 1:20

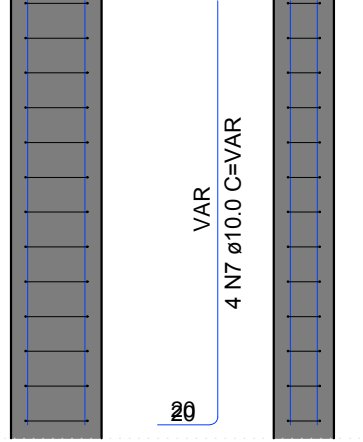


P7=P8=P12=P13=P14=P15=P17=
=P18=P21=P22=P27=P28=P29=
=P30=P32=P37=P38=P43

FUNDAÇÃO - L1

SEÇÃO

ESC 1:20



ESTADO DE MATO GROSSO PREFEITURA MUNICIPAL DE BARRA DO GARÇAS CNPJ 03.429.235/0001-00 Rua Carleão, 522 centro - Barra do Garças MT - CEP 78.600-000		SECRETARIA MUNICIPAL DE PLANEJAMENTO URBANO E OBRAS		Folha : 05/06
Obras : CONSTRUÇÃO DA ESCOLA INDÍGENA MODULAR - ALDEIA SÃO MARCOS		COORDENADAS: 15°22'34,83" S 52°54,99 95"O		
Conteúdo : DETALHAMENTO DE VIGAS BALDRAMES E SAPATAS		APROVAÇÃO		
Local : TERRA INDÍGENA ALDEIA SÃO MARCOS BARRA DO GARÇAS - MT				
Propriedade : Prefeitura Municipal Barra do Garças				
Proprietário: Prefeitura Municipal		Autor do projeto: Responsável Técnico		
Área Construída:	Dimensões:	Escala : INDICADA		
Arquivo : CAD	Data : NOVEMBRO/2021	Projetista :		